

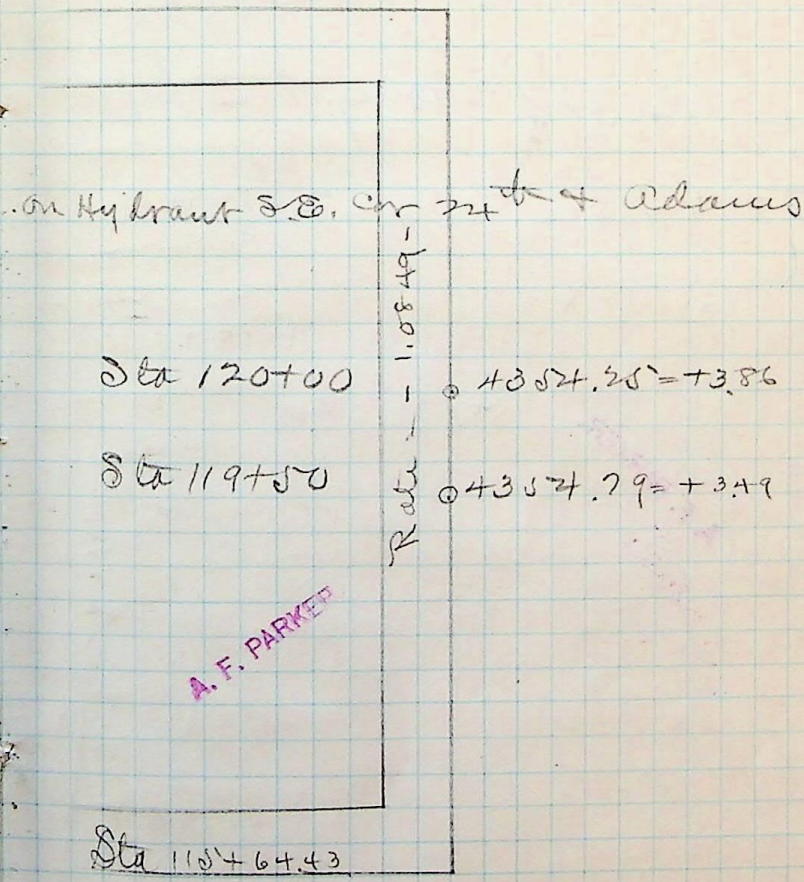
Wednesday, Oct 9th, 1889
 Curb line & grades for
 William Farrell

West side Adams avenue
 Sta^s 119+50 - 120

Back	1.31	+365.07		4363.76
peg			7.09	4357.98
	4.85			
		4362.83		
119+50			4.55	4358.28
120+00			4.72	4358.11

A. F. PARKER

25th Street



24th Street

Adams Ave

A. F. PARKER